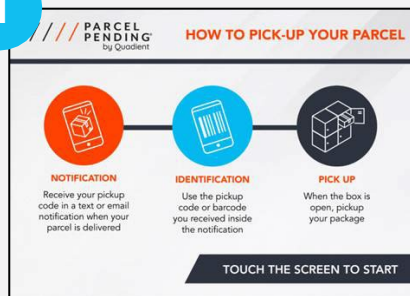




# / Retrieving Packages from the Lockers

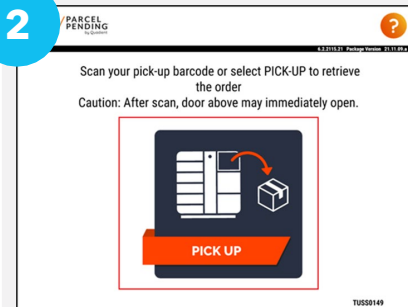
## OPTION 1 - Manual Entry (Using email or text notification)

1



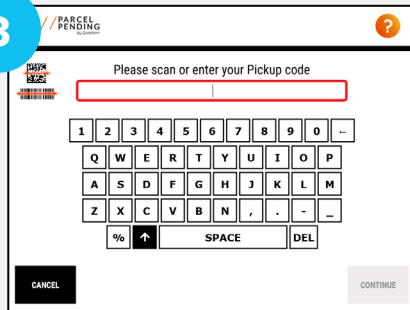
Tap anywhere on the screen to begin.

2



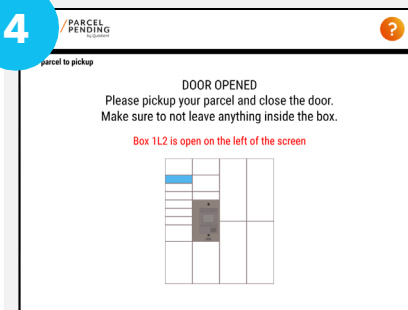
Press the PICK UP button.

3



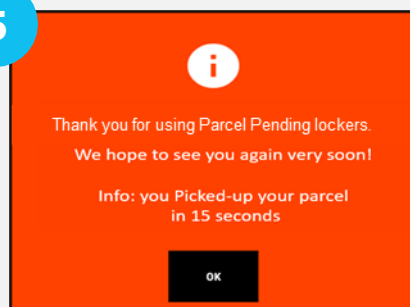
Enter your Pickup code as directed, then CONTINUE.

4



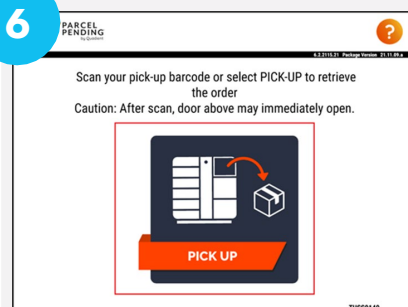
Please remove your item(s) from the open locker, then close the door when finished.

5



After removing all parcels, your pick up is complete. Select "OK" to return to the screen in step 2 above.

6



Repeat steps for additional parcels.

Thank you for using the Parcel Pending locker system. Please contact the following for assistance with deliveries, or if you have additional questions:

[customersuccess@parcelpending.com](mailto:customersuccess@parcelpending.com)

Support Phone Number: (877) 689-1584

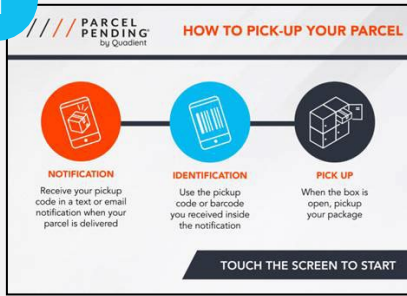
Support Text Number: (949) 979-5759



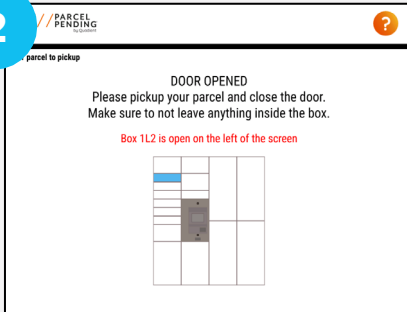
# / Retrieving Packages from the Lockers

## OPTION 2 - Contact Free (Using the barcode)

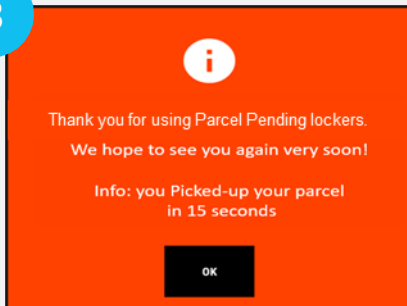
1 Scan your barcode as directed to begin.



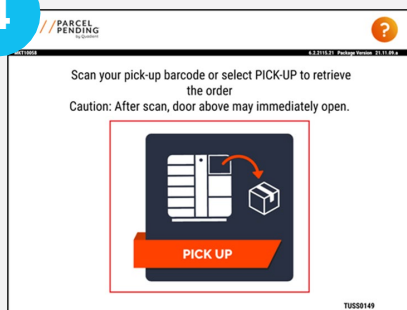
2 Please remove your item(s) from the open locker, then close the door when finished.



3 For additional parcels, scan your pickup code as directed.



4 After removing all parcels, your pick up is complete.



Thank you for using the Parcel Pending locker system. Please contact the following for assistance with deliveries, or if you have additional questions:

[customersuccess@parcelpending.com](mailto:customersuccess@parcelpending.com)  
Support Phone Number: (877) 689-1584  
Support Text Number: (949) 979-5759